

Kenmore Abbey

488 Commonwealth Avenue
Boston, MA 02215

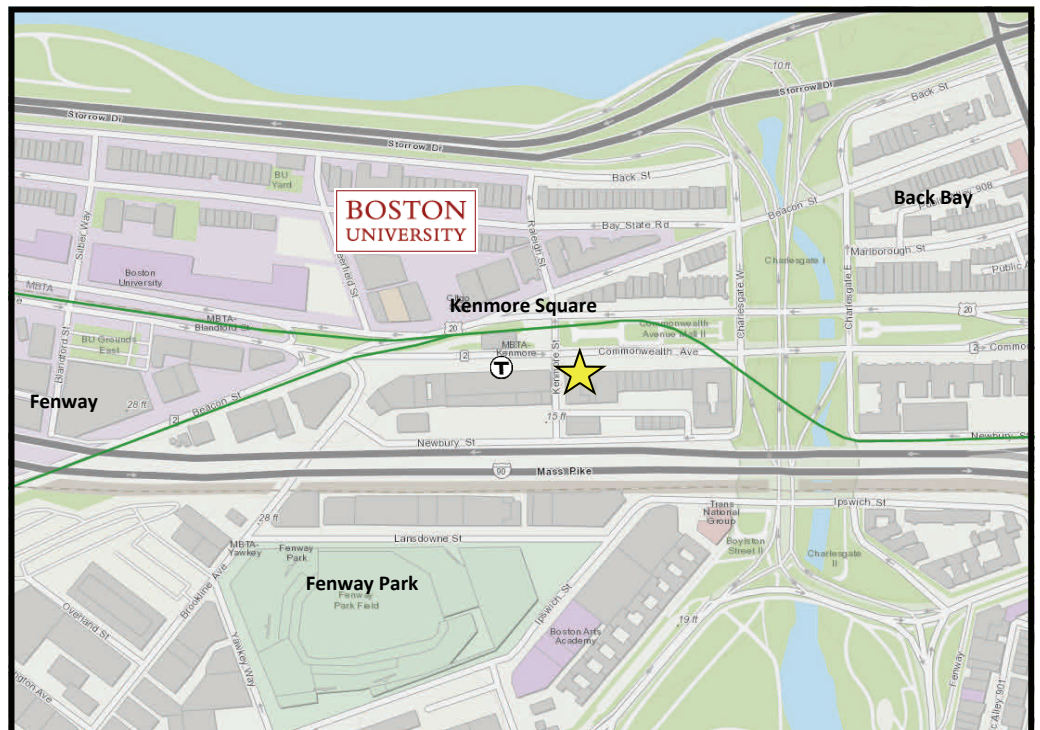
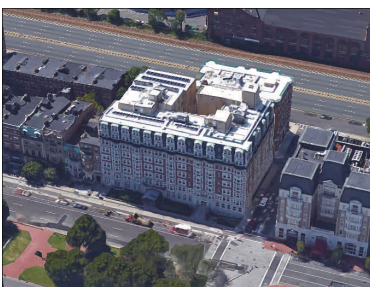
Kenmore Square
CORNER of Commonwealth Ave.
& Kenmore Street

Available Office/ Retail Space:
5,876 USF of finished basement
space with additional storage
available

Rent Quoted Upon Request

Building data:

- Built circa 1890s
- 199 units, 100% elderly housing
- Originally constructed as a hotel and converted to its current use in 1984
- Within approximately 200 ft of the Green Line's "Kenmore" station and MBTA bus terminal
- Direct entrance
- Possible exterior signage
- Up to 6-7 on-site parking spaces available for a monthly charge



CRE Brokerage

Sixty State Street
Boston, MA 02109

Phone: 617 725 0200
E-mail: joe@creboston.com

Kenmore Abbey

488 Commonwealth Avenue
Boston, MA 02215

Finished Basement Plan

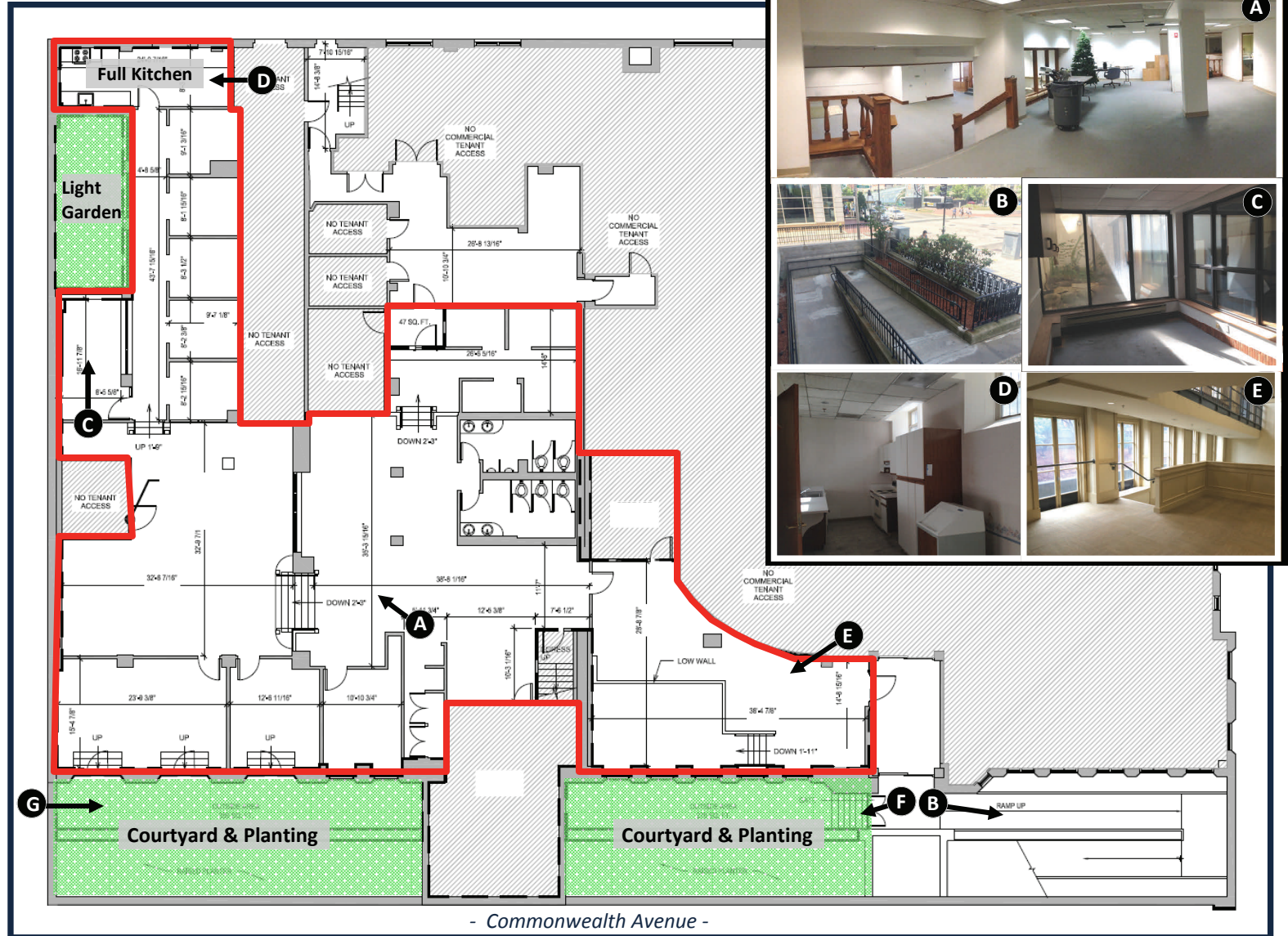
Ceiling Heights (estimated):

- 7'7" - 9'9"

The space currently has:

- * 3 private offices, 1 large conference room) and 5 large cubicles (all with natural light)
- * Open space
- * Full Kitchen

Ample natural light provided by two courtyards, an outdoor light well garden, a skylight and windows in the back kitchen



 Outdoor space reserved exclusively for tenant

*This drawing is for illustration purposes only. Not to scale or suitable for measurements.