

132 BOYLSTON STREET

Boston, MA 02110

p. 617 725 0200
e. joe@creboston.com
web www.creboston.com

FOR SALE
SECOND FLOOR OFFICE

1,854 rsf

Mid Town Cultural District;
CORNER of Boylston Place &
Boylston Street

Sales Price: Quote

Dramatic views of the Boston
Common

Spectacular windows facing
Boylston AND 3 bay windows
along Boylston Place- all
windows are operable

Full floor privacy

Steps to the Boylston Street
subway station, The Boston
Common, State Transportation
Building and Emerson College

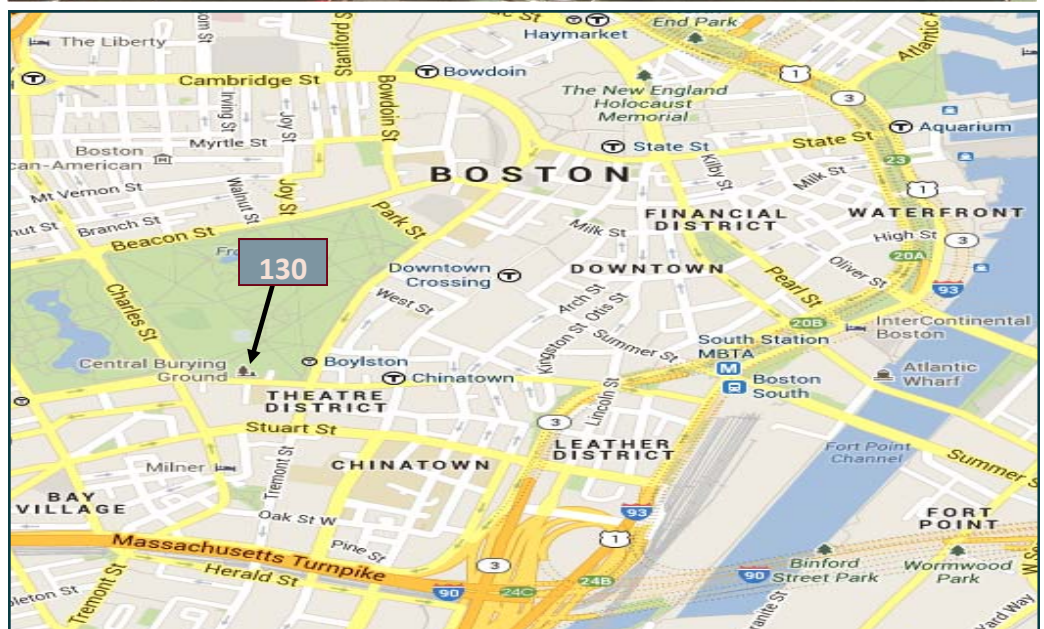
High ceilings up to 11 1/2'

Reserved garage parking
available

Can be combined with the
ground floor 3,611 square foot
commercial condominium
directly below for a combined
total of up to 5,485 rentable
square feet

Contact: Joe Levanto
Phone: 617 725 0200
Email: joe@creboston.com

Note: Every effort has been made to furnish the most accurate information available on this property. However, all statements and conditions contained herein are subject to errors, omissions, prior lease, sale or removal from the market without notice.

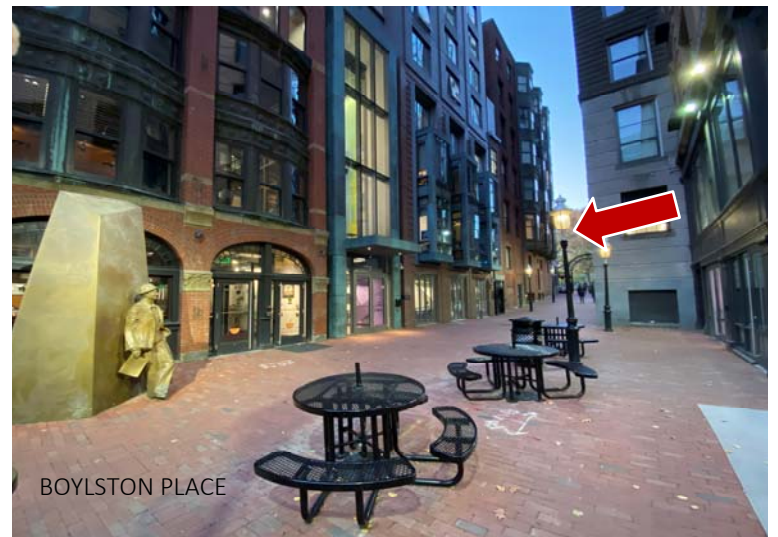


132 BOYLSTON STREET

Boston, MA 02110

p. 617 725 0200
e. joe@creboston.com
web www.creboston.com

#



p. 617 725 0200
 e. joe@creboston.com
 web www.creboston.com

Second Floor Plan

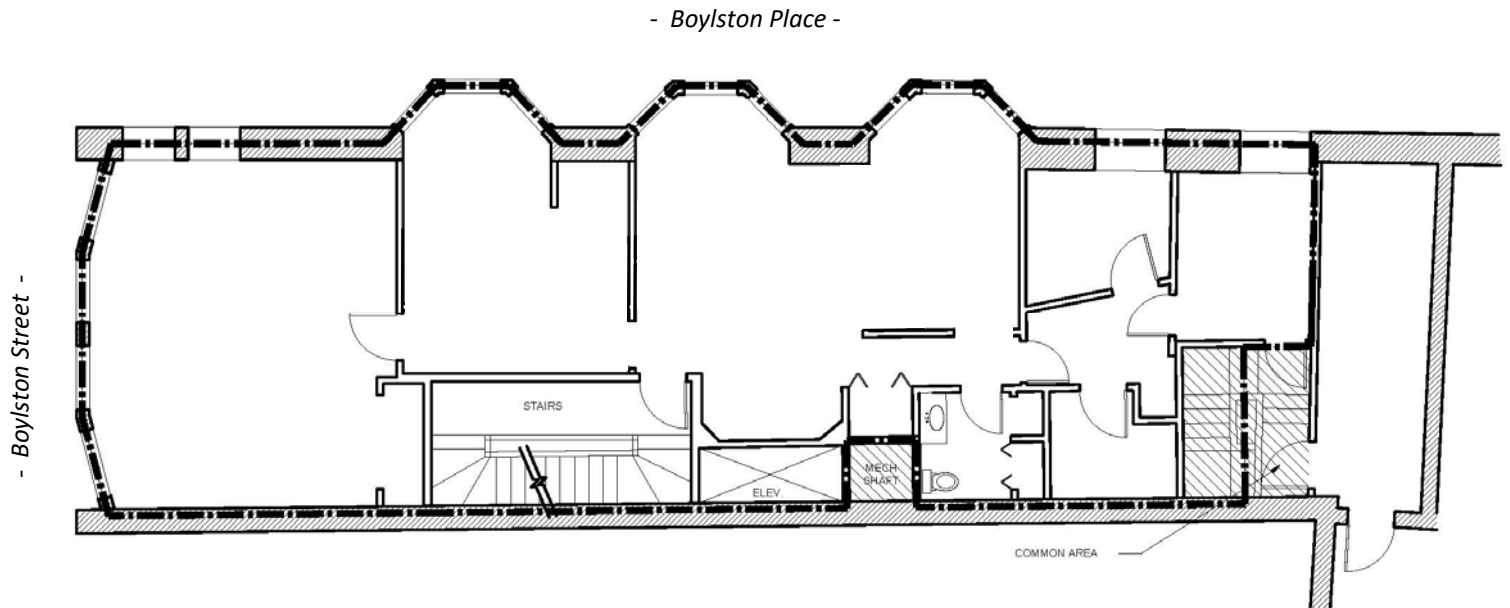


1,854 rentable square feet

- 2 private offices (potential for 5+)
- 1 large conference room
- Reception area
- 2 large open space areas
- Storage room
- Private bathroom

Ceilings range from 7'10" in hallway areas to 10'-11' 5" in the offices and conference rooms

RE TAXES \$12,569 per year
 CONDO FEE \$7,368 per year



NOT TO SCALE

DSA ARCHITECTS
 ONE SHIPTARD WAY
 MEDFORD, MA
 781-391-1039

SECOND FLOOR LEASE PLAN
 132 BOYLSTON STREET
 BOSTON, MA

RENTABLE SF:
 1,854 RSF

PLEASE NOTE: This drawing is for basic illustration purposes only . Not to scale or suitable for measurements and may not reflect current conditions.