

55 BROMFIELD | 15 BOSWORTH

Boston, MA 02108

3,856 sf restaurant building for lease (SUBDIVISABLE)

3 spaces; 1) Eat in restaurant and bar, 2) Take out restaurant w/catering basement, and 3) Hair Salon
Fully equipped - Kitchen venting and Ansul systems in place

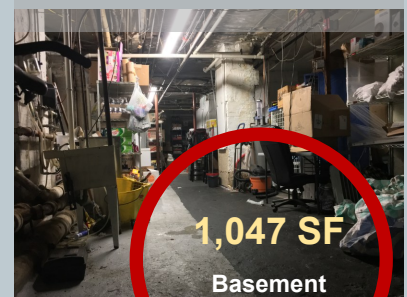
CRE
Brokerage
SPECIALISTS IN COMMERCIAL REAL ESTATE
Joe Levanto 617 504 0363



ENTRY TO TAVERN AT
15 BOSWORTH STREET



BASEMENT
PRODUCTION AREA



Note: Every effort has been made to furnish the most accurate information available on this property. However, all statements and conditions contained herein are subject to errors, omissions, prior lease, sale or removal from the market without notice.

55 BROMFIELD | 15 BOSWORTH

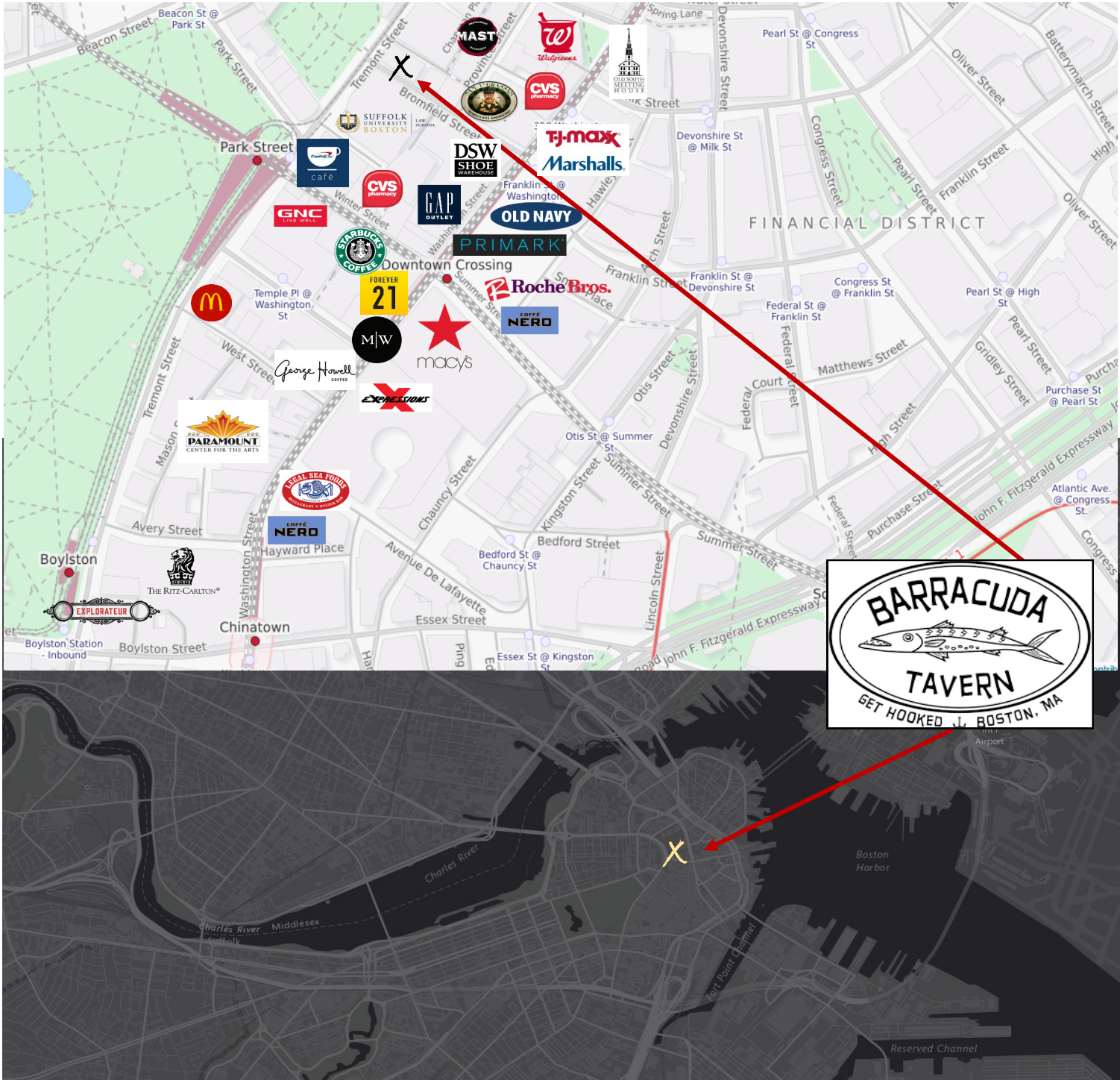
Boston, MA 02108

location

Seven Day Downtown Crossing Location

~250,000 - 320,000 people enter the Downtown Crossing District *each day*

CRE
Brokerage
SPECIALISTS IN COMMERCIAL REAL ESTATE
Joe Levanto 617 504 0363



Note: Every effort has been made to furnish the most accurate information available on this property. However, all statements and conditions contained herein are subject to errors, omissions, prior lease, sale or removal from the market without notice.

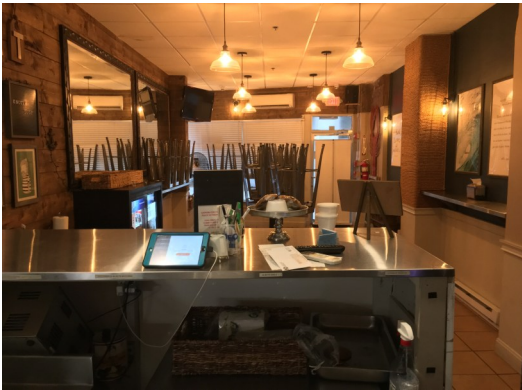
55 BROMFIELD

Boston, MA 02108

Ground Floor
Former "On-The Fly" take out restaurant

PICS AND SPECS

CRE
Brokerage
SPECIALISTS IN COMMERCIAL REAL ESTATE
JOE LEVANTO 617 504 0363



DINING AREA WITH 18 SEATS

10' 6" CEILING



TAKE OUT COUNTER



KITCHEN WITH HOOD AND VENT

6' 6" CEILING



KITCHEN WITH WALK IN FRIDGE



USEABLE PRODUCTION BASEMENT

9' 7" CEILING



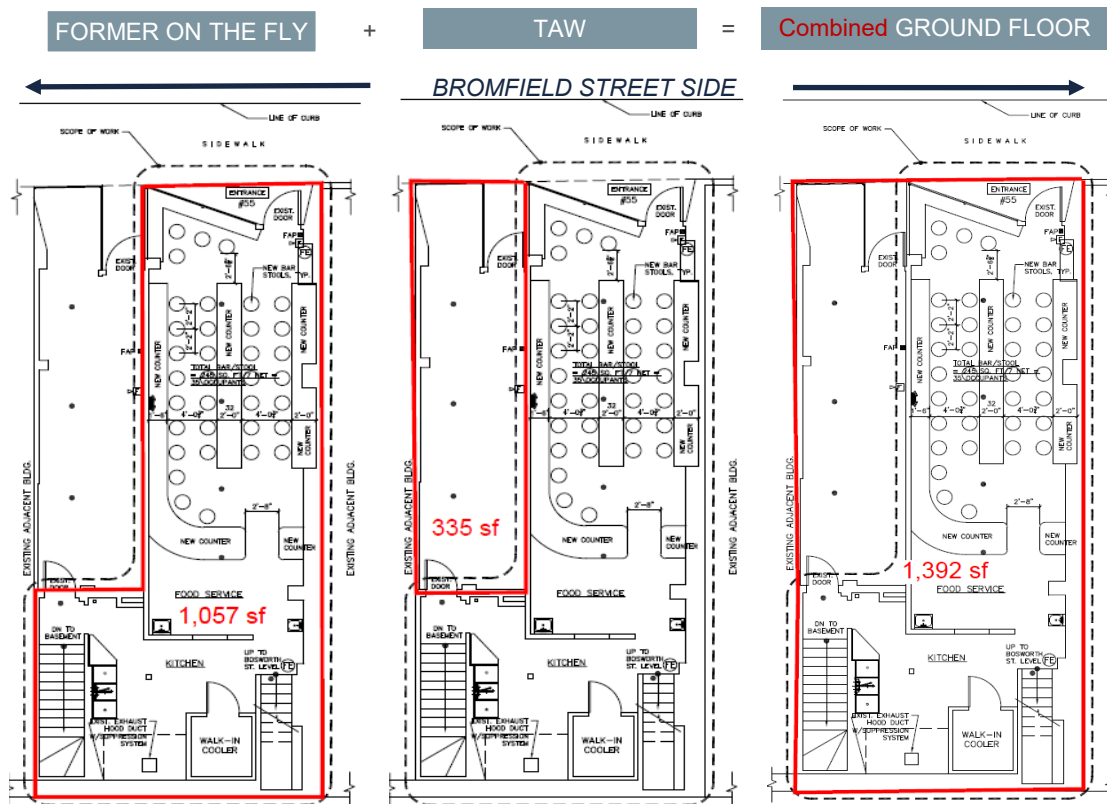
- ◇ Full kitchen ventilation system
- ◇ Electric upgrades (2010 & 2017)
- ◇ Electric heat
- ◇ Separate meter for lights, outlets and AC
- ◇ Gas Stove
- ◇ Sprinklers in place
- ◇ Ansul System
- ◇ Fire Alarm
- ◇ Comcast wired
- ◇ Furniture, Fixtures & Equipment available

BROMFIELD

Boston, MA 02108

Ground Floor & Basement restaurant space

FLOOR PLANS; Bromfield Ground floor + Basement

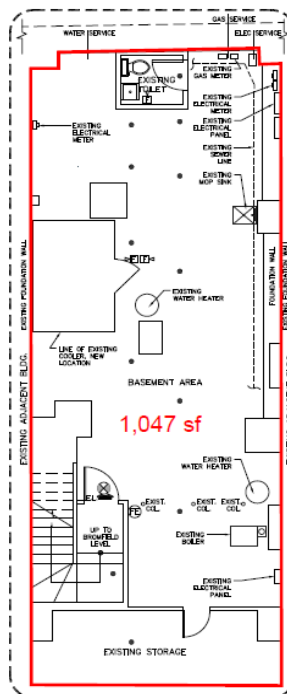


Ground Floor

1,057 SF
restaurant

335 SF
TAW

1,392 SF
combined



Note: Every effort has been made to furnish the most accurate information available on this property. However, all statements and conditions contained herein are subject to errors, omissions, prior lease, sale or removal from the market without notice.

15 BOSWORTH

Boston, MA 02108

Second Floor with Ground Floor Entry
former "Barracuda Tavern" restaurant

PICS AND SPECS



DINING AREA WITH 44 SEATS

12' 11" CEILING



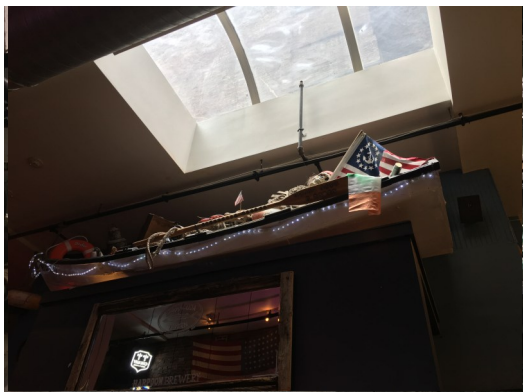
BAR WITH 60 PERSON CAPACITY



KITCHEN WITH WINDOWS, HOOD & VENT



BATHROOMS



17' 3" TO SKYLIGHT

SKYLIGHT



6' 9" STORAGE AREA CEILING

BOSWORTH SUPPORT AREA / WALK IN

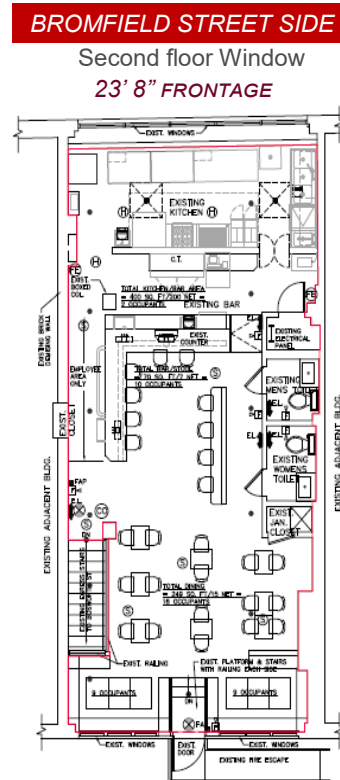
- ◇ Full kitchen ventilation system
- ◇ Electric upgrades (2010 & 2017)
- ◇ Electric heat
- ◇ Separate meter for lights, outlets and AC
- ◇ Gas Stove
- ◇ Sprinklers in place
- ◇ Ansul System
- ◇ Fire Alarm
- ◇ Comcast wired
- ◇ Furniture, Fixtures & Equipment available

BOSWORTH

Boston, MA 02108

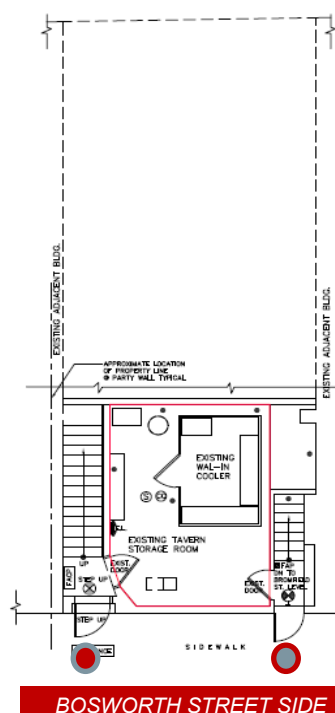
Second Floor with Ground Floor Entry
Former “Barracuda Tavern” restaurant

FLOOR PLANS; Bosworth Ground floor & Second floor



Second Floor

1,173 SF
Bar &
Restaurant



244 SF

Note: Every effort has been made to furnish the most accurate information available on this property. However, all statements and conditions contained herein are subject to errors, omissions, prior lease, sale or removal from the market without notice.