

# Retail Space Available

617 725 0200



CITY GOLF

Downtown Crossing;  
Between Washington & Tremont

Ground Floor:  
Approximately **3,714 sf**

(expandable to approximately  
**5,328 sf**)

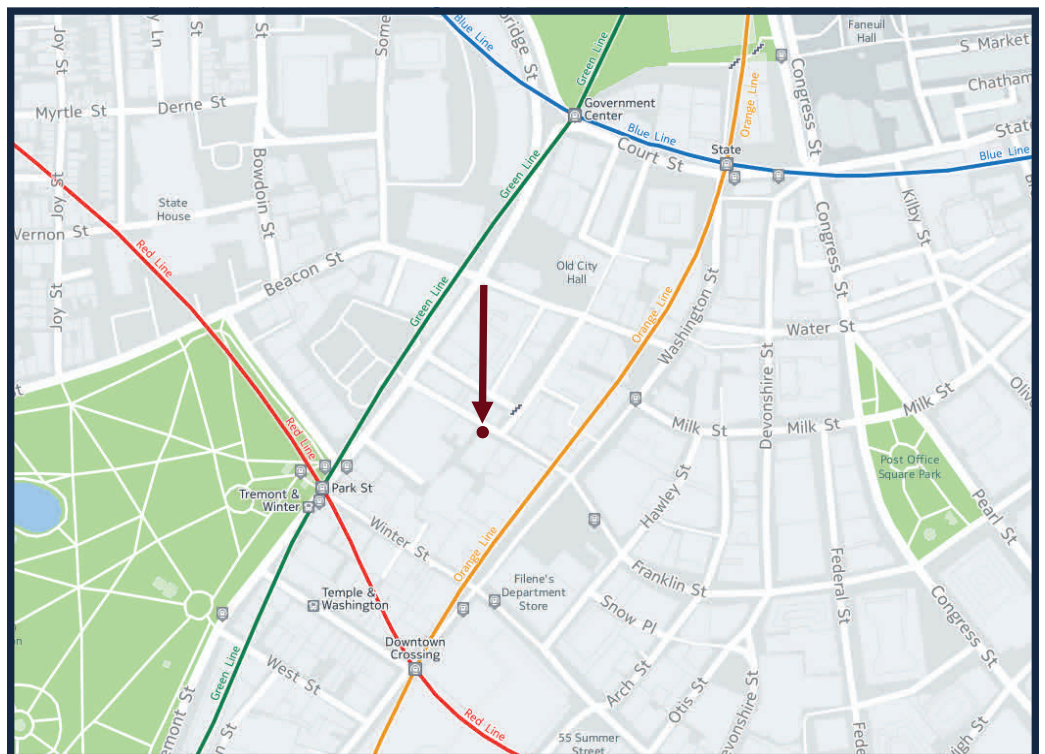
Available Immediately

Rent: Quote

Real Estate Taxes and Operating  
Expenses= \$8 (estimate)

# 38 Bromfield Street

Boston, MA 02108



## CRE Brokerage

Sixty State Street  
Boston, MA 02109

Phone: 617 725 0200  
E-mail: [joe@creboston.com](mailto:joe@creboston.com)

Note: Every effort has been made to furnish the most accurate information available on this property. However, all statements and conditions contained herein are subject to errors, omissions, prior lease, sale or removal from the market without notice.

**Retail  
Space  
Available**

**617 725 0200**

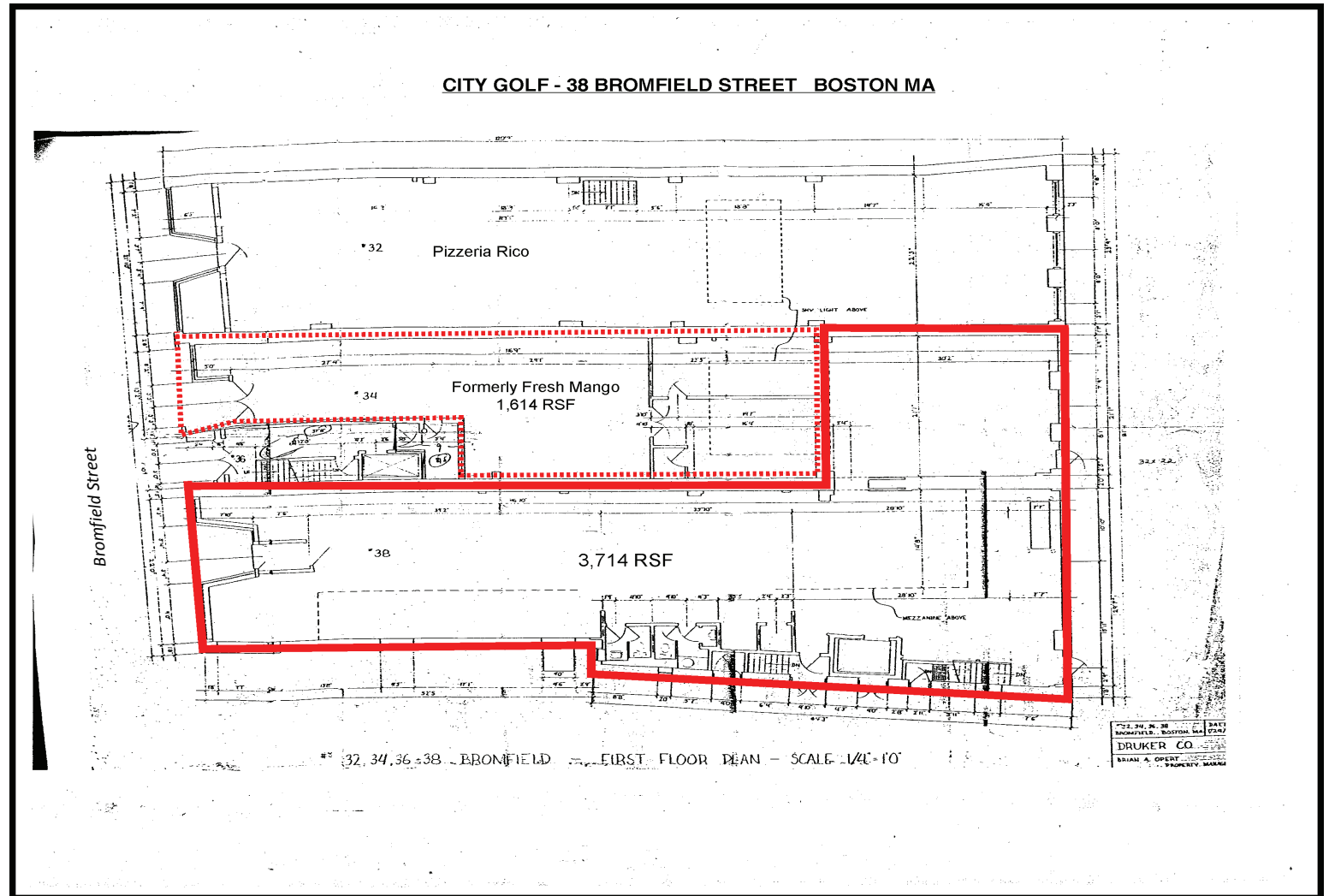


**Ground Floor  
Plan**



# 38 Bromfield Street

Boston, MA 02108



This drawing is for illustration purposes only. Not to scale or suitable for measurements.