

Retail Space Available

617 725 0200



11 School Street BOSTON, MA 02108

Sweet Bakery

Downtown Crossing;
Between Washington and
Province Streets

Approximately:

1,245 rentable sf - Ground Flr
533 rentable sf - Basement

Frontage (estimated):

19' on School Street

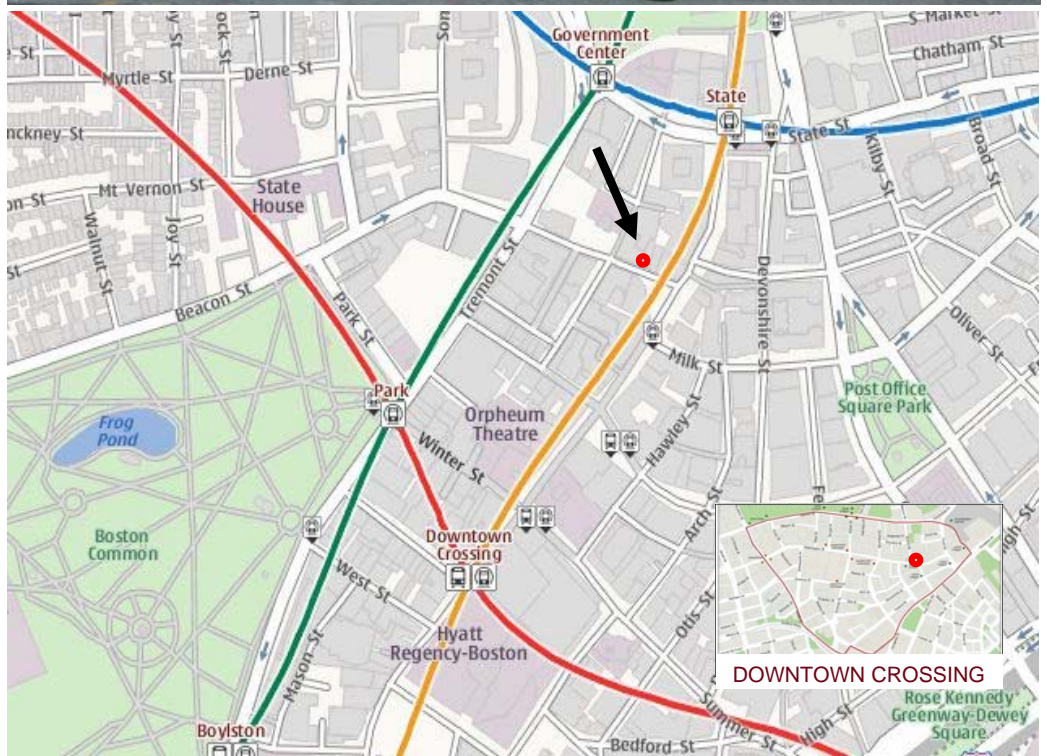
Ceiling Heights (estimated):

8'6" - Street Level
6'8" - Basement

CRE Brokerage

Sixty State Street
Boston, MA 02109

Phone: 617 725 0200
joe@creboston.com



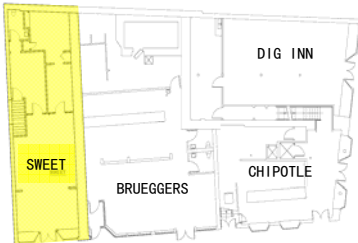
Note: Every effort has been made to furnish the most accurate information available on this property. However, all statements and conditions contained herein are subject to errors, omissions, prior lease, sale or removal from the market without notice.

Retail Space Available

617 725 0200



Ground Floor Plan
1,245 rsf



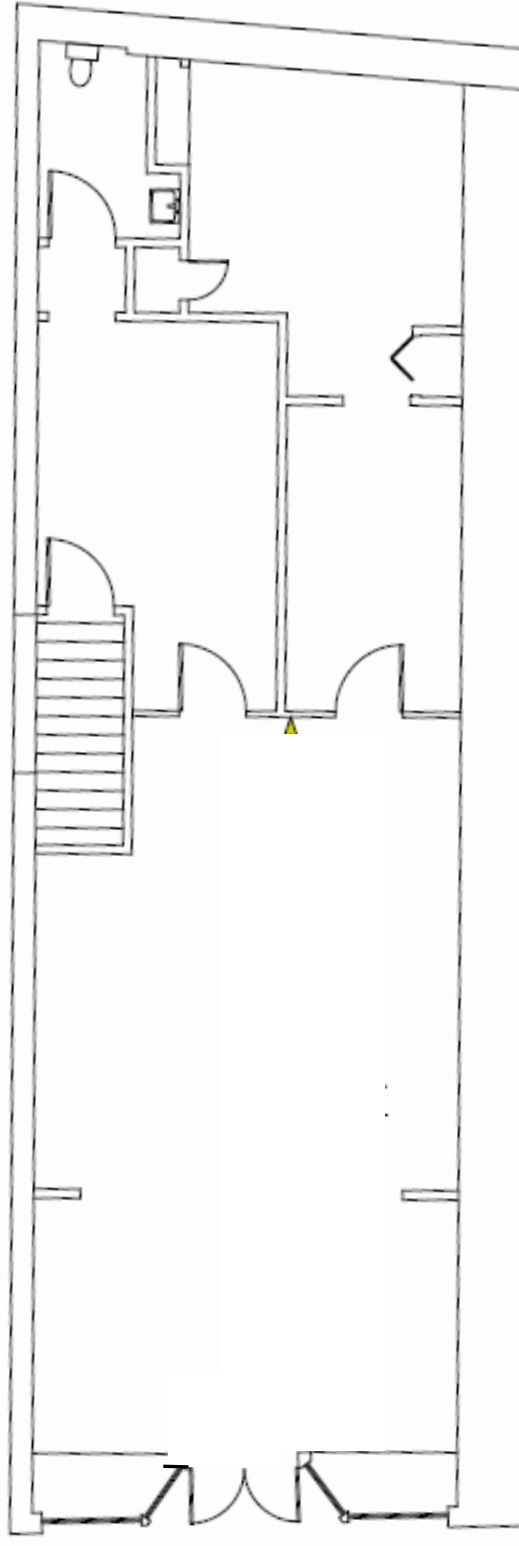
CRE Brokerage

Sixty State Street
Boston, MA 02109

Phone: 617 725 0200
joe@creboston.com

11 School Street

BOSTON, MA 02108



School Street

Note: Every effort has been made to furnish the most accurate information available on this property. However, all statements and conditions contained herein are subject to errors, omissions, prior lease, sale or removal from the market without notice.

**Retail
Space
Available**

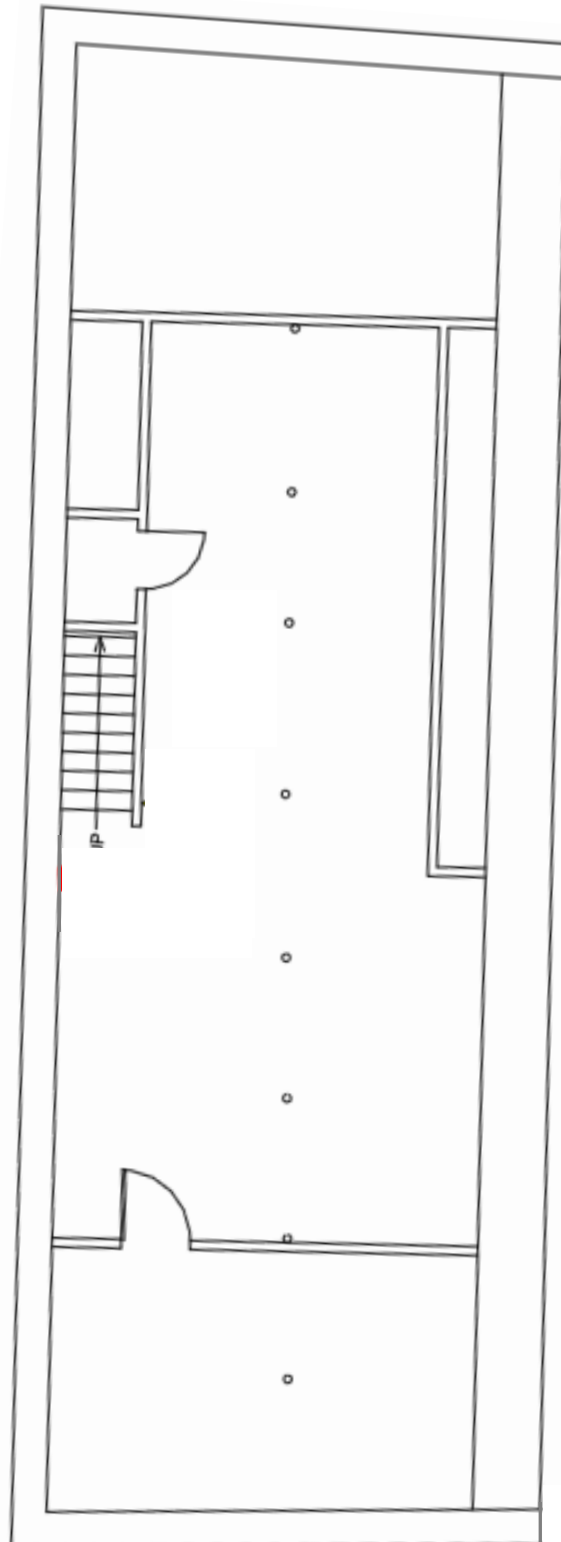
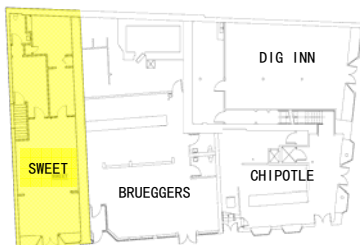
617 725 0200



11 School Street

BOSTON, MA 02108

**Basement Floor Plan
533 rsf**



School Street

CRE Brokerage

Sixty State Street
Boston, MA 02109

Phone: 617 725 0200
joe@creboston.com

Note: Every effort has been made to furnish the most accurate information available on this property. However, all statements and conditions contained herein are subject to errors, omissions, prior lease, sale or removal from the market without notice.